

APRIL 2019 CHANGES TO CMS  
FIVE-STAR QUALITY RATING SYSTEM

Susan Chenail RN, CCM, RAC-CT  
Senior Quality Improvement Analyst  
LeadingAge NY

---

---

---

---

---

---

---

---

---

---

---

---

**HEALTH INSPECTION  
DOMAIN**

- Return to three surveys used to calculate the rating
- Return to 36 months of complaints used to calculate rating
- Return of the Aging of Complaints
- Using surveys both before and after the new survey process

***Nursing Home Compare***  
**Five-Star Quality Rating System:**  
**Technical Users' Guide**

**State-Level Health Inspection Cut Point  
Table**

10 70 20

---

---

---

---

---

---

---

---

---

---

---

---

### Health Inspection Domain Survey Weighting

Inspection Cycle	1	2	3
Deficiency Score			
Complaint Score			
Revisits Score			
Total Score			
Survey Weighting	1/2	1/3	1/6
Weighted Survey Score			
Total Weighted Survey Score			<input type="text"/>



---

---

---

---

---

---

---

---

---

---

---

## STAFFING DOMAIN

New RN threshold for 1 Star rating  
 New Cut point table  
 RN incentivized weighting

## Staffing Cut Points

Table 4  
 Staffing and Rating (updated April 2019)

RN rating and hours	Total nurse staffing rating and hours (RN, LPN and nurse aide)				
	1	2	3	4	5
	<3.108	3.108-3.579	3.580-4.037	4.038-4.407	>or=4.408
1 <0.317	★	★	★★	★★	★★★
2 0.317-0.507	★★	★★	★★★	★★★	★★★★
3 0.508-0.730	★★★	★★★★	★★★★	★★★★	★★★★★
4 0.731-1.048	★★★★	★★★★★	★★★★★	★★★★★	★★★★★
5 >or= 1.049	★★★★★	★★★★★	★★★★★	★★★★★	★★★★★




---



---



---



---



---



---



---



---



---



---

### Calendar for Payroll Based Journal (PBJ) Staffing Reporting on Nursing Home Compare

PBJ Reporting Quarter	PBJ Deadline	Five-Star Reporting Quarter
10/1/18 – 12/31/18	2/14/19	April 2019
1/1/19 – 3/31/19	→ 5/15/19	July 2019
4/1/19 – 6/30/19	8/14/19	October 2019
7/1/19 – 9/30/19	11/14/19	January 2020
10/1/19 – 12/31/19	2/14/20	April 2020

---

---

---

---

---

---

---

---

---

---

---

---



## QUALITY MEASURE DOMAIN

### Changes:

Reports Long and Short-Stay Rating and an  
Overall Rating

Scoring, Weighting and Points Threshold

New Measures

Retired Measures

Replaced Measures

Specification Changes

---

---

---

---

---

---

---

---

---

---

---

---

QUALITY MEASURE  
DOMAIN  
SHORT-STAY RATING

Measures used to calculate the Short-Stay  
Rating:

**MDS-Based**  
Percent of Short Stay Residents-  
Who Made Improvements in Function  
Who Self-Report Moderate to Severe Pain  
Who Newly Received an Antipsychotic

**Claims-Based**  
or  
Medicare A FFS Stays-  
Discharge to the Community  
Re-Hospitalized After a NH Admission  
Out-Patient ED Visit  
Pressure Ulcer New or Worsened

---

---

---

---

---

---

---

---

---

---

---

---











## Point Ranges for the Quality Measures Ratings

QM Rating	January 2017 QM Rating Thresholds	July 2016 QM Rating Thresholds	February 2015 QM Rating Thresholds
★	325 - 789	275 - 669	225 - 544
★★	790 - 889	670 - 759	545 - 629
★★★	890 - 969	760 - 829	630 - 689
★★★★	970 - 1054	830 - 904	690 - 759
★★★★★	1055 - 1600	905 - 1350	760 - 1100

### April 2019

QM Rating	Long-Stay QM Rating Thresholds	Short-Stay QM Rating Thresholds	Overall QM Rating Thresholds
★	175 - 524	167 - 541	342 - 1066 ←
★★	525 - 624	542 - 638	1067 - 1263
★★★	625 - 709	639 - 721	1264 - 1431
★★★★	710 - 799	722 - 805	1432 - 1605
★★★★★	800 - 1250	806 - 1250	1606 - 2500 ↑

---

---

---

---

---

---

---

---

---

---

---

---

---

---

---

**QUALITY MEASURE DOMAIN**

Measures Added, Retired and Replaced

- Two New Measures  
SS PU & LS ED Use
- One Retired Measure  
LS Restraints
- Two Replaced Measures  
SS PU – QRP & SS D/C – QRP

---

---

---

---

---

---

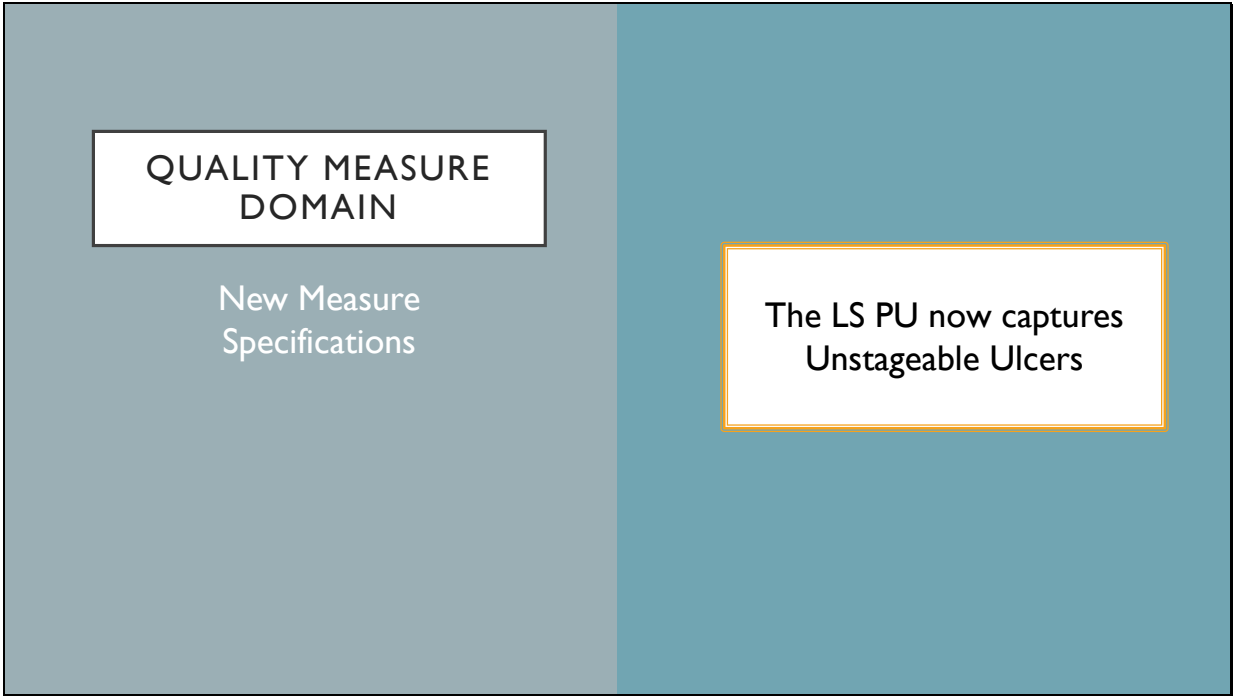
---

---

---

---

---



---

---

---

---

---

---

---

---

---

---

---







## NHC Special Focus Facility ICON



If a nursing home has a history of persistent poor quality of care, as indicated by the findings of state or federal inspection teams, it can be considered a Special Focus Facility (SFF). This means that the facility is subjected to more frequent inspections, escalating penalties, and potential termination from Medicare and Medicaid.

---

---

---

---

---

---

---

---

---

---

---



ANY  
QUESTIONS?

---

---

---

---

---

---

---

---

---

---

---

